



Release 325 Graphics Drivers for Windows - Version 327.23

RN-W32723-01v01 | September 19, 2013
Windows Vista / Windows 7 / Windows 8 / Windows 8.1

Release Notes



TABLE OF CONTENTS

1 Introduction to Release Notes	1
Structure of the Document	1
Changes in this Edition	1
2 Release 325 Driver Changes	2
Version 327.23 Highlights	2
What's New in Version 327.23	3
What's New in Release 325	5
Limitations in This Release	7
Advanced Driver Information	8
Changes and Fixed Issues in Version 327.23.....	11
Fixes Since Previous Driver Version 326.80	11
Fixes Since Previous WHQL Driver Version 320.49	11
Changes and Fixed Issues in Version 326.80.....	13
Windows Vista/Windows 7/Windows 8/Windows 8.1 Fixed Issues	13
Changes and Fixed Issues in Version 326.41.....	14
Windows Vista/Windows 7 Fixed Issues	14
Windows 8 Fixed Issues	14
Windows 8.1 Fixed Issues	15
Changes and Fixed Issues in Version 326.19.....	16
Windows Vista/Windows 7 Fixed Issues	16
Windows 8 Fixed Issues	16
Windows 8.1 Fixed Issues	17
Open Issues in Version 327.23	18
Windows Vista/Windows 7 32-bit Issues.....	18
Windows Vista/Windows 7 64-bit Issues.....	19
Windows 8 32-bit Issues.....	21
Windows 8 64-bit Issues.....	21
Windows 8.1 Issues	22
Not NVIDIA Issues.....	23
Windows Vista Considerations	23
Windows 7 Considerations.....	23
Unsupported Features.....	24

TABLE OF CONTENTS

OpenGL Application Issues	25
Application Issues.....	26
Operating System Issues	31
Known Product Limitations	32
Screen Turns Black When Performing Clean Overinstall of NVIDIA Drivers on Windows 8.1 Optimus Notebook.....	34
Flickering Black Screen Occurs After Installing the NVIDIA Drivers on Windows 8	35
Total Available Graphics Memory Reported Incorrectly.....	36
Increasing 4-way SLI/Multi-GPU Performance.....	37
3D Vision USB Driver Does Not Get Installed.....	37
No PhysX Acceleration Using the GPU	38
NVIDIA PhysX System Software Cannot be Installed or Uninstalled in Windows Safe Mode	38
3DMark 11 Does not Run in Stereoscopic 3D Mode.....	38
Previous Driver Files Remain After Overinstalling with Release 256 or Earlier Drivers	39
Do not Use Windows Rollback for Graphics Drivers.....	39
Uninstalling Drivers Using Device Manager is not Supported.....	39
Changing the Primary Display Across SLI GPUs Takes Longer than Expected	40
Understanding the DirectX Version Shown in the NVIDIA System Information Window.....	40
Using HDMI Audio with Displays that have a High Native Resolution ...	41
Using HDMI Displays that do not Support Audio	41
Using HDMI/DisplayPort Audio in Dualview or Clone Mode Configurations	42
Flat Panel Scaling Controls are Non-functional for Some TV Modes for Some Displays.....	42
GPU Runs at a High Performance Level (full clock speeds) in Multi-display Modes	43
GeForce GTX 295 Fan Control Does not Function With NVIDIA Control Panel Performance Group version 6.03.06.00	43
1280x1024 @ 60 Hz not Available on BenQ FP241W Monitors	43
GeForce 6 and 7 Series Cards Cannot Output Interlaced Signals in SLI Mode [251457]	43
Image Sharpening Control not Available with GeForce 8 Series and later	

TABLE OF CONTENTS

GPUs	44
Gigabyte GA-6BX Motherboard	44
2 The Release 325 Driver	45
About the Release 325 Driver	45
Hardware and Software Support.....	46
Supported Operating Systems.....	46
Supported NVIDIA Desktop Products	46
Supported NVIDIA Notebook Products	50
Supported Languages.....	55
Driver Installation.....	55
Minimum Hard Disk Space	55
Before You Begin.....	56
Installation Instructions.....	56
Appendix A: Mode Support for Windows	58
General Mode Support Information.....	59
Understanding the Mode Format	60
GeForce 700, 600, 500, 400, 300, 200, 100, 9 Series, and 8 Series GPUs	61
GeForce 9M, 8M, 100M, 200M, 300M, 400M, 500M, 600M Series, and Quadro NVS and Quadro FX Notebook GPUs.....	63
Modes Supported by TV Encoders	65

LIST OF TABLES

Table 2.1 Supported NVIDIA Desktop GPUs	46
Table 2.2 Supported NVIDIA Notebook GPUs	50
Table 2.3 Supported NVIDIA NVS and Quadro NVS M GPUs.....	53
Table 2.4 Supported NVIDIA Quadro M and Quadro FX M GPUs.....	54
Table A.1 Modes Supported for High Resolution Displays	59
Table A.2 Non-standard Modes Supported	59
Table A.3 Mode Support for S-Video and Composite Out.....	65
Table A.4 Mode Support for Component YPrPb Out and DVI Out.....	65

01 INTRODUCTION TO RELEASE NOTES

This edition of *Release Notes* describes the Release 325 family of graphics drivers (versions 325.xx to 327.xx) for Microsoft® Windows® Vista and later¹. NVIDIA provides these notes to describe performance improvements and bug fixes in each documented version of the driver.

Structure of the Document

This document is organized in the following sections:

- ▶ “[Release 325 Driver Changes](#)” on page 2 gives a summary of changes, and fixed and open issues in this version.
- ▶ “[The Release 325 Driver](#)” on page 45 describes the NVIDIA products and languages supported by this driver, the system requirements, and how to install the driver.
- ▶ “[Mode Support for Windows](#)” on page 58 lists the default resolutions supported by the driver.

Changes in this Edition

This edition of the *Release Notes* for Windows Vista and later¹ includes information about NVIDIA graphics driver version 327.23, and lists changes made to the driver since the Release 319 driver version 320.49. These changes are discussed beginning with the chapter “[Release 325 Driver Changes](#)” on page 2.

1. Includes Windows Vista, Windows 7, Windows 8, and Windows 8.1

02 RELEASE 325 DRIVER CHANGES

This chapter describes open issues for version 327.23, and resolved issues and driver enhancements for versions of the Release 325 driver up to version 327.23.

The chapter contains these sections:

- ▶ “Version 327.23 Highlights” on page 2’
- ▶ “Changes and Fixed Issues in Version 327.23” on page 11
- ▶ “Changes and Fixed Issues in Version 326.80” on page 13
- ▶ “Changes and Fixed Issues in Version 326.41” on page 14
- ▶ “Changes and Fixed Issues in Version 326.19” on page 16
- ▶ “Open Issues in Version 327.23” on page 18
- ▶ “Not NVIDIA Issues” on page 23
- ▶ “Known Product Limitations” on page 32

Version 327.23 Highlights

This section provides highlights of version 327.23 of the NVIDIA Release 325 Driver for Windows Vista/Windows 7/Windows 8/Windows 8.1.

- ▶ What’s New in Version 327.23
- ▶ What’s New in Release 325
- ▶ Limitations in This Release
- ▶ Advanced Driver Information

What's New in Version 327.23

This Game Ready WHQL driver offers the best gaming experience and is also the recommended driver update for the Windows 8.1 Preview.

See also “What's New in Release 325” on page 5.

Performance Boost

Increases performance for GeForce 400/500/600/700 Series GPUs in several PC games when compared to the GeForce 320.49 WHQL drivers.

NVIDIA SHIELD

This driver enables GeForce-to-SHIELD streaming. For more information, visit <http://shield.nvidia.com/>

NVIDIA PhysX System Software

► This driver package installs NVIDIA PhysX System Software v9.13.0725.

NVIDIA GPU PhysX acceleration is available only on systems with GeForce 8-series and later GPUs with a minimum of 256MB dedicated graphics memory.

NVIDIA GPU PhysX acceleration is not available if there is a non-NVIDIA graphics processor in the system, even if it is not used for rendering.

HD Audio Driver

This driver package installs the HD audio driver, version 1.3.26.4.

NVIDIA 3D Vision

► Added or updated the following 3D Vision profiles:

- *Archeblade - Good*
- *Assassin's Creed 4: Black Flag - Good*
- *Batman Arkham Origins - 3DV Ready*
- *Dark - Good*
- *Deadpool - Good*
- *District 187 - Fair*
- *Emergency 2013 - Fair*
- *F1 2013 - Good*
- *Fast and Furious Showdown - Good*

- *Final Fantasy XIV Realm Reborn - Not Recommended*
- *Hero Warz - Fair*
- *Legends of Dawn -Good*
- *Lost Planet 3 - Fair*
- *March of War - Not Recommended*
- *Mortal Kombat Komplete Addition - Excellent*
- *MotoGP 13 - Good*
- *Peta City - Good*
- *Ravaged - Good*
- *Ride to Hell: Retribution - Fair*
- *Soldier Front 2 - Good*
- *Splinter Cell: Blacklist - Not Recommended*
- *The Bureau: XCOM Declassified -Not Recommended*
- *Wargame Airland Battle -Good*
- *NASCAR The Game: 2013 - DQ*
- *Payday 2 - DQ*
- *Rome 2: Total War - Good*
- *The Raven - Legacy of a Master Thief - Good*

Fixed Issues

- ▶ See [“Changes and Fixed Issues in Version 327.23”](#) on page 11 for a list of other changes and resolved issues in this driver version.

What's New in Release 325

The section summarizes the driver changes in Release 325, including previous Release 325 drivers:

Windows 8.1 Preview

This is a recommended driver update for the Windows 8.1 Preview.

Performance Boost

Increases performance for GeForce 400/500/600/700 Series GPUs in several PC games when compared to the GeForce 320.49 drivers.

4K Display Support

- ▶ Added support for tiled 4kx2k @ 60 Hz displays.

3D Vision/Stereoscopic 3D

- ▶ Added support for selective suspend mode on external 3DVision USB emitters.
- ▶ Added support for 3D Blu-ray disc playback using DirectX 11.1.

NVIDIA Control Panel

- ▶ **Surround:** 3D Settings->Configure Surround
Added the ability to create keyboard shortcuts for enabling/disabling Surround, switching between triple and single-wide display resolutions, and enabling/disabling bezel correction.

OpenGL

- ▶ Added support for TXAA.

NVIDIA SLI Technology

- ▶ Added or updated the following SLI profiles:
 - Added SLI profile for *Spinter Cell: Blacklist*
 - Added SLI profile for *Batman: Arkham Origins*

NVIDIA 3D Vision

- ▶ Added or updated the following 3D Vision profiles:
 - *Call of Juarez Gunslinger - Fair*

- *Dead Island Riptide - Good*
- *Formula Truck - 3DV Ready*
- *Grid 2 - Excellent*
- *Kritika - Fair*
- *The WalkingDead: Survival Instinct - Not Recommended*
- *Trials Evolution - Fair*
- *Alien Fear - Fair*
- *Defiance- Fair*
- *Magu The Real - Good*
- *Pro Baseball 2K - Fair*
- *Surgeon Simulator 2013 - Good*
- *War Thunder: World of Planes - Fair*
- *ARMA III - DQ*
- *Chivalry: Medieval Warfare - Good*
- *Jagged Alliance - Fair*
- *Kerbal Space Program - Fair*
- *Marvel Heroes - Fair*
- *Natural Selection 2 - Not Recommended*
- *Pinball FX2 - Good*
- *Primal Fears - Good*
- *Resident Evil Revelations - Good*
- *Saints Row Episode 4 - Not Recommended*
- *Serious Sam III - Good (Rating change)*

Limitations in This Release

The following are features that are not currently supported or have limited support in this driver release:

▶ **Surround Gaming with 3-way SLI**

Surround gaming is not supported on a 3-way SLI system using GeForce GTX 200 series GPUs. [681228/683943]

▶ **NVIDIA Control Panel Display Category**

The Graph tab on the Adjust Desktop Color Settings page is not available.

▶ **Negative LOD Bias Clamp**

Negative LOD bias clamp for DirectX applications is not supported on Fermi-based GPUs and later.

▶ **Hybrid Power**

Support for Hybrid Power, a Hybrid SLI technology, is discontinued and not available with this driver.

▶ **Legacy Support for GeForce 6-series and GeForce 7-series GPUs**

GeForce 6-series and GeForce 7-series GPUs have moved to legacy support with the GeForce Release 304 drivers. These products are no longer supported beginning with the GeForce Release 310 drivers.

▶ **3D Vision Legacy Support Notification for Windows Vista**

Support for 3D Vision under Windows Vista is discontinued beginning with the Release 313 drivers. 3D Vision and 3DTV Play functionality will not be available with these drivers.

NVIDIA will continue to support basic 3D Vision and 3DTV Play functionality for Windows Vista with Release 310 or earlier drivers. Basic functionality includes full-screen viewing of 3D games, pictures, and movies on 3D Vision monitors, notebooks, and 3D TVs (with 3DTV Play software installed).

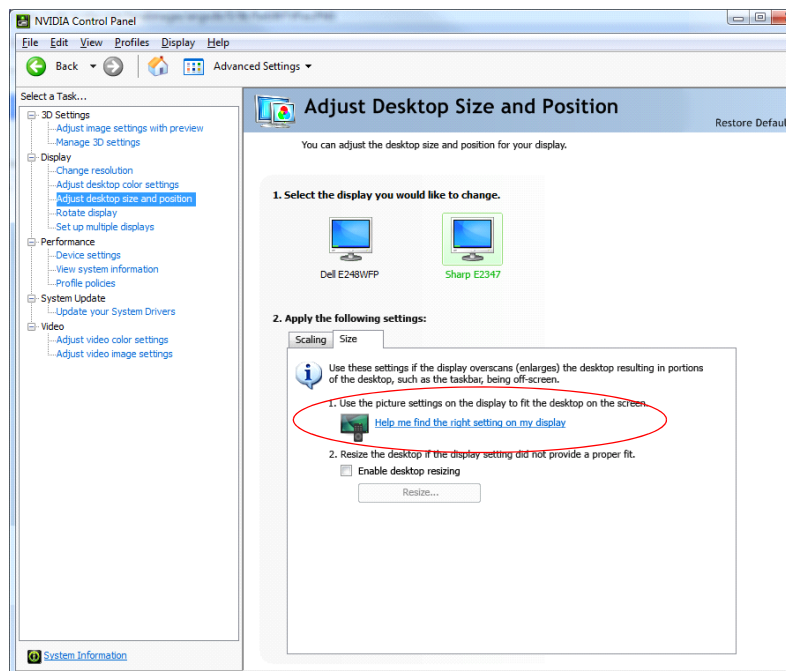
Advanced Driver Information

This section contains the following additional information about the driver:

- ▶ [Help for Resizing Your HDTV Desktop](#)
- ▶ [Dynamic GPU Performance Mode](#)
- ▶ [Power Efficiency Optimizations](#)
- ▶ [Understanding the DirectX Information Shown in the NVIDIA System Information Window](#)

Help for Resizing Your HDTV Desktop

The best way to resize the screen in order to view the entire content is to use the controls provided by the display hardware. Click the link on the Size tab to view a guide to changing the settings on your display hardware.

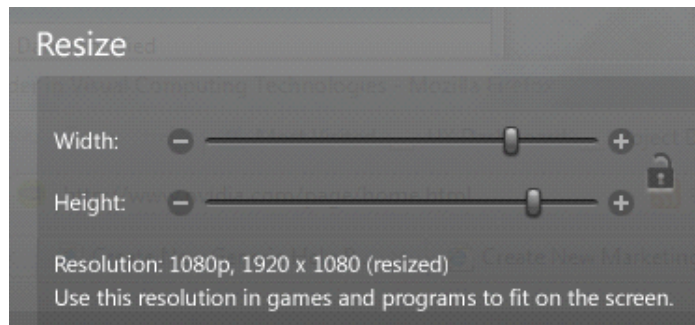


The resize controls on the NVIDIA Control Panel are provided in case satisfactory results cannot be achieved using the controls on the display.

After resizing the HDTV desktop using the NVIDIA Control Panel Resize controls, the new custom resolution created is now added to the list of available resolutions for that display, and also added to the resolution list within the game or application.

In Release 190 and later drivers, the method for resizing the HDTV desktop has changed to provide better image quality when applying underscan. This method results in a new custom resolution being created which needs to be selected from games or applications to apply the resizing. In the example displayed in the following screen shot, the

underscan has created a new resolution (1216x682). Although this resolution looks different, it is still in HD format. Remember to select this resolution in your game or other application in order to take advantage of it.



Note: Some games or applications may not support the new resolution.

Dynamic GPU Performance Mode

With the Release 280 drivers, NVIDIA GPU clock speeds will increase more quickly in response to increased graphics demands. Conversely, with lower graphics use the GPU clock speed slows down more quickly, conserving as much power as possible.

In the Release 280 drivers, some users reported a noticeable fluctuation in clock speeds while engaging in various tasks on the PC. With the Release 285 and later drivers, adjustments have been made to reduce the sensitivity to levels similar to the R275 driver.

Power Efficiency Optimizations

Release 310 drivers introduced power-optimizing enhancements. As a result of these enhancements, you may notice that GPU core clock speeds are different with this driver. For example, the GPU core clock might be faster when the GPU is in idle mode than in previous drivers. Or you may notice higher GPU core clock speeds after closing or opening certain games than in previous drivers.

This is because the reported GPU core clock frequency is no longer correlated to GPU power-saving states. Instead of lowering the GPU core clock frequency, the hardware and software use other methods to put the GPU into a low power state when the GPU is idle or in response to changing application requirements. This ensures optimum power use while continuing to provide high graphics performance.

Understanding the DirectX Information Shown in the NVIDIA System Information Window

The System Information window—accessed by clicking **System Information** at the bottom left corner of the NVIDIA Control Panel—provides technical information about the NVIDIA graphics cards and driver installed in the system.

It also provides the following system information:

- ▶ **Operating system:** For example, “Windows 7 Enterprise, 64-bit”
- ▶ **DirectX runtime version:** For example, “11.0”

In order to use the version of DirectX reported in the System Information window, the NVIDIA GPU and graphics driver must also support that DirectX version.

This information is provided in the *Graphics card information* section of the System Information window as follows:

▶ **DirectX support**

(Provided in previous driver versions)

This is the DirectX version that is supported by the NVIDIA graphics hardware and driver.

▶ **Direct3D API version**

(Provided in later driver versions, for Windows 7 and later)

This is the Direct3D version that is supported by the NVIDIA graphics hardware and driver. The API version is expressed in terms of Direct3D – the graphics subsystem component of DirectX.

▶ **Direct3D feature level**

(Provided in later driver versions, for Windows 7 and later)

Direct3D feature levels describe a subset of features within the Direct3D API version that are supported by the NVIDIA graphics hardware and driver.

Changes and Fixed Issues in Version 327.23

The following sections list the important changes and the most common issues resolved since versions 326.80 and 320.49. This list is only a subset of the total number of changes made in this driver version. The NVIDIA bug number is provided for reference.

Fixes Since Previous Driver Version 326.80

Windows Vista/Windows 7/Windows 8 Fixed Issues

- ▶ [PhysX]: After installing the driver, occasionally the PhysX processor selection in the NVIDIA Control Panel is set to **CPU** instead of **AutoSelect (Recommended)**, resulting in PhysX games running slowly. [1049752]

Windows 8.1 Fixed Issues

- ▶ The preview pane for featured images is blank on <http://photos.3dvisionlive.com/>. [1315027]

Fixes Since Previous WHQL Driver Version 320.49

Windows Vista/Windows 7/Windows 8 Fixed Issues

- ▶ Applications may crash when using factory overclocked GPUs. [1299187]
- ▶ [PhysX]: After installing the driver, occasionally the PhysX processor selection in the NVIDIA Control Panel is set to **CPU** instead of **AutoSelect (Recommended)**, resulting in PhysX games running slowly. [1049752]
- ▶ [GeForce GTX TITAN][Crysis 3]: Textures inb the game. [1316417]
- ▶ [GeForce GTX 680][Battlefield 3]: Black edges flicker in the Noshar Canals map section of the game. [1313779]
- ▶ [Kepler-class GPUs, GeForce 8800 series][League of Legends]: The driver may crash during the game. [1308395]
- ▶ [GeForce GTX 280][STALKER: Clear Sky][DirectX 10]: The game does not launch and shows a black screen. [1307001]
- ▶ [GeForce GTX 560][3DTV Play]: 3DTV Play cannot be enabled when using the embedded emitter. [1306972]
- ▶ [GeForce GTX 650 Ti][Surround]: With 2D Surround enabled, nothing happens when clicking the Windows Start button. [1299351]
- ▶ [GeForce GTX 460]: Blu-ray movie playback is slow and sometimes crashes. [1299035]
- ▶ [NVS 4200M][Notebook]: Brightness controls may working after the notebook is docked. [1265807]

- ▶ [SLI] [3D Vision] [GeForce 400M series, notebook] [Civilization V- DirectX 11]: With SLI enabled, the 3D Vision left eye goes blank when running the game in DirectX 11 mode. [956630]
- ▶ [Surround][Far Cry 3]: With 3D Surround enabled, the system hangs when changing the in-game Surround resolution. [1256120]

To workaround, either turn of stereoscopic 3D (toggle using Ctrl+T) or switch the game to windowed mode before changing the resolution, then turn stereoscopic 3D back on (or switch back to full-screen mode if applicable) after changing the resolution.

Changes and Fixed Issues in Version 326.80

The following sections list the important changes and the most common issues resolved since version 326.41. This list is only a subset of the total number of changes made in this driver version. The NVIDIA bug number is provided for reference.

Windows Vista/Windows 7/Windows 8/Windows 8.1 Fixed Issues

- ▶ Some 27" 1440p monitors with Korean B grade panels are not detected. [1329305]
- ▶ The NVIDIA Driver fails to install on some systems. [1329909]
- ▶ TDR error may occur when the system is idle for several hours. [1330455]
- ▶ [Metro: Last Light]: Game performance drops with latest PhysX software. [1316114]
- ▶ [GeForce GTX TITAN][Sniper Elite V2]: The benchmark crashes when Advanced Shadows is turned on. [1253786]
- ▶ [GeForce GTX 650Ti][Surround]: When three displays connected in 2D Surround mode, the Windows Start button cannot be clicked. [1299351]
- ▶ [NFS]: There is corruption on the screen when playing the game. [1315717]
- ▶ [Surround][Far Cry 3]: With 3D Surround enabled, the system hangs when changing the in-game Surround resolution. [1256120]
- ▶ [SLI][Windows Magnifier]: With SLI enabled, the application crashes when attempting to close. [1339556]
- ▶ [SLI]: TDR errors may occur when launching or switching between multiple YouTube videos. [1246309]
- ▶ [SLI][Sleeping Dogs]: The game crashes when played with SLI enabled. [1327315]

Changes and Fixed Issues in Version 326.41

The following sections list the important changes and the most common issues resolved since version 326.19. This list is only a subset of the total number of changes made in this driver version. The NVIDIA bug number is provided for reference.

Windows Vista/Windows 7 Fixed Issues

- ▶ [Notebook][NVS 4200M]: Brightness control stops working after the notebook is docked. [1265807]
- ▶ [GeForce GTX 460][Nero Blu-ray player]: Blu-ray playback is slow, with mixed colors, and the player crashes occasionally. [1299035]
- ▶ [GeForce GTX 570/280][STALKER Clear Sky]: The game does not load during launch and presents a black screen. [1307001]
- ▶ [Surround][Hitman Absolution, Diablo III, Bioshock Infinite]: With Surround enabled, the mouse cursor is restricted to one of the displays after launching the game. [1320505]
- ▶ [Surround][Tomb Raider][WOW: Mists of Pandaria]: With Surround enabled, the game minimizes to the desktop after clicking any in-game menu option. [1326743]
- ▶ [SLI][GeForce GTX TITAN][FI 2012]: Game performance drops with SLI enabled. [1248846]

Windows 8 Fixed Issues

- ▶ [GeForce GTX 460][Nero Blu-ray player]: Blu-ray playback is slow, with mixed colors, and the player crashes occasionally. [1299035]
- ▶ [GeForce GTX 680][GeForce Experience]: The GeForce Experience fails to install. [1276491]
- ▶ [Surround][Tomb Raider][WOW: Mists of Pandaria]: With Surround enabled, the game minimizes to the desktop after clicking any in-game menu option. [1326743]

Windows 8.1 Fixed Issues

- ▶ With multiple users signed in, graphics and controls may corrupt upon resume from standby. [1309666]
- ▶ [Surround][Tomb Raider][WOW: Mists of Pandaria]: With Surround enabled, the game minimizes to the desktop after clicking any in-game menu option. [1326743]
- ▶ [Optimus Notebook][GeForce Experience]: GeForce Experience crashes (does not launch) when opened on the internal panel. [1324010]
- ▶ [Optimus notebook][Assassin's Creed 3]: The game stops playing. [1321459]
- ▶ [SLI][Surround]: With Surround, SLI performance is similar to single-GPU performance. [1318686/1323437]

Changes and Fixed Issues in Version 326.19

The following sections list the important changes and the most common issues resolved since version 320.49. This list is only a subset of the total number of changes made in this driver version. The NVIDIA bug number is provided for reference.

Windows Vista/Windows 7 Fixed Issues

- ▶ [GeForce GTX 560][3DTV Play]: 3DTV Play cannot be enabled with 3D-capable HDTV when using the embedded emitter. [1306972]
- ▶ [GeForce GTX 680][Battlefield 3]: Black edge corruption and flickering occur in some areas in the game map Noshar Canals. [1313779]
- ▶ [GeForce GTX TITAN] [Crysis 3]: Texture sporadically flickers on and off in the game. [1316417]
- ▶ [Dead Space 3]: The game performance drops when Shadow Quality is set to Soft High. [1279021]
- ▶ [GeForce GTX 670]: UpdatusUser account password expires after a certain period of time. [1243075]
- ▶ [SLI][GeForce GTX TITAN][F.3.A.R.]: With SLI enabled, the game crashes when starting a new game. [1313160]
- ▶ [Multi-GPU][GeForce GTX 690]: NVIDIA OpenGL does not load when more than five GPUs are enabled. [1221048]
- ▶ [SLI][GeForce GTX 680]: The context menu for running applications is in the wrong location when spanning the taskbar across three monitors. [1230140]
- ▶ [SLI][Arma 3]: No game performance improvement when SLI is enabled. [1248312]

Windows 8 Fixed Issues

- ▶ [GeForce GTX 560][3DTV Play]: 3DTV Play cannot be enabled with 3D-capable HDTV when using the embedded emitter. [1306972]
- ▶ [Multi-GPU][GeForce GTX 690]: NVIDIA OpenGL does not load when more than five GPUs are enabled. [1221048]
- ▶ [GeForce GTX 670]: UpdatusUser account password expires after a certain period of time. [1243075]
- ▶ [SLI][GeForce GTX 680]: The context menu for running applications is in the wrong location when spanning the taskbar across three monitors. [1230140]
- ▶ [SLI][Arma 3]: No performance improvement when SLI is enabled. [1248312]

Windows 8.1 Fixed Issues

- ▶ [Surround]: With Surround enabled, the NVIDIA Control Panel crashes or becomes unresponsive when attempting to rotate the display. [1308354]
- ▶ [Surround]: With three displays connected and Surround hot-keys enabled via the Surround Wizard, the Surround hot-keys do not work. [1314263]
- ▶ [Surround][3-way-SLI]: After enabling Surround and SLI, the taskbar moves to the left display instead of being confined to the center display. [1314906]

Open Issues in Version 327.23

As with every released driver, version 327.23 of the Release 325 driver has open issues and enhancement requests associated with it. This section includes lists of issues that are either not fixed or not implemented in this version. Some problems listed may not have been thoroughly investigated and, in fact, may not be NVIDIA issues. Others may have workaround solutions.

For notebook computers, issues can be system-specific and may not be seen on your particular notebook.

- ▶ “Windows Vista/Windows 7 32-bit Issues” on page 18
- ▶ “Windows Vista/Windows 7 64-bit Issues” on page 19
- ▶ “Windows 8 32-bit Issues” on page 21
- ▶ “Windows 8 64-bit Issues” on page 21
- ▶ “Windows 8.1 Issues” on page 22

Windows Vista/Windows 7 32-bit Issues

Single GPU Issues

- ▶ [Video][Notebook][Internet Explorer][Stage Video]: Stage Video picture-in-picture content cannot be played within Internet Explorer. [999929]

GeForce 500 Series

- ▶ [GeForce 500 series] [Need for Speed: The Run]: During the race the sun flickers and there are bright blips and black patches. [909577]
- ▶ [GeForce 500 Series]: Metro 2033–light bloom increases and decreases throughout the game at light sources such as bulbs, lanterns, or fire. [846214]

GeForce 8 Series GPUs

- ▶ GeForce 8600: HD resolutions higher than 720p are not available.[308627]

Multi-GPU Issues

- ▶ [Quad SLI] [GeForce GTX 295]: “SLI connector is missing” balloon pops up even if the SLI bridge connector is attached.[919269]

Windows Vista/Windows 7 64-bit Issues

Single GPU Issues

- ▶ [Stereoscopic 3D]: After switching the refresh rate switched to 120 Hz using the NVIDIA Control Panel and then running a 3D stereo application, the refresh rate automatically switches back to the previous refresh rate upon closing the 3D stereo app. [1343087]
- ▶ [Guild Wars 2]: Ambient Occlusion effect disappears at different camera angles and when using supersampling. [1023202]

GeForce 500 Series

- ▶ [GeForce 500 series] [Need for Speed: The Run]: During the race the sun flickers and there are bright blips and black patches. [909577]
- ▶ GeForce 500 series: Deus Ex—there is corruption on the ground in later levels of the game. [871486]
- ▶ GeForce 500 Series: Metro 2033—light bloom increases and decreases throughout the game at light sources such as bulbs, lanterns, or fire. [846214]
- ▶ GeForce GTX 580: HAWX—during the game, an outline of an air plane appears in the upper left corner of the screen after pressing Alt+Tab. [746186]
- ▶ GeForce 400 series: Total War: Shogun 2 —the sun and surrounding area within the game flickers. [807036]

NVS Series

- ▶ NVS 4200M, Optimus: F1 2011—the game hangs while selecting "Quit To Main Menu" during gameplay. [879537]

Multi-GPU Issues

- ▶ [SLI][Surround]: The driver loses NvSmartMax functionality if installed over a Release 319 or older driver while Surround is enabled.[1364734]

The NVIDIA driver component NvSmartMax allows the driver to maximize an application window to the center display, among other Surround features.

To regain NvSmartMax functionality, reboot the system after the overinstall. (The driver does not prompt for a reboot.)

- ▶ [SLI], [Company of Heroes: Tales of Valor]: With SLI enabled, there is heavy flickering in the game after switching from windowed mode to full-screen mode. [892264]

- ▶ [3D Surround, SLI][Far Cry 2 DirectX 10]: The ambient occlusion effect is misplaced in the game when in-game antialiasing is set to 4x or higher and ambient occlusion, stereoscopic 3D and Surround are enabled from the NVIDIA Control Panel. [986112]

GeForce 500 Series

- ▶ [SLI] [GeForce 500 series]: With SLI enabled, the secondary Dualview display may go blank after hot-plugging the DisplayPort monitor and then rebooting the system. [906810]
- ▶ [3D Surround], 3xGeForce 500/400 Series: When sending output to a fourth display outside of the GPU Surround group, the Surround resolution (3-wide) switches to a non-Surround resolution (single display). [736859]
- ▶ [SLI], GeForce 500 Series: Dragon Age II (DirectX 11)–shadows flicker in the cutscene when SLI is enabled. [849235]

GeForce 400 Series

- ▶ [SLI], GeForce 400 series, Surround gaming: Dragon Age Origins– the game does not render single monitor resolutions correctly when Surround gaming is enabled. [663802]

GeForce 200 Series

- ▶ [Quad SLI] [GeForce GTX 295]: "SLI connector is missing" balloon pops up even if the SLI bridge connector is attached.[919269]
- ▶ [Quad SLI/Multi-GPU], [GeForce 200 series] [Batman: Arkham City DirectX 9]: Game performance drops when Quad-SLI or Multi-GPU mode is enabled. [891613/966120]
- ▶ [SLI], [GeForce 200 series]: The display may go blank for close to 30 seconds while disabling SLI. [922557]
- ▶ [SLI], GeForce 200 Series, Surround gaming: Medusa–the game doesn't span completely across the monitors if any resolution other than the native resolution is set. [670390]

Windows 8 32-bit Issues

Single GPU Issues

- ▶ [Video][Notebook] [Internet Explorer]
 - [YouTube]: The NVIDIA Control Panel video color settings have no effect on YouTube flash video playback within Internet Explorer 10. [999485]
 - [Stage Video]: Stage Video picture-in-picture content cannot be played within Internet Explorer. [999929]
- ▶ [Video][Notebook] [Hulu Desktop]: When attempting to play videos using Hulu Desktop, there is audio but no video. [1000017]
- ▶ [3DTV][Notebook]: Full-screen 3D content may flicker when the external 3DTV is set as the primary display in extended mode and a Windows Store App is running in the background. [1351276]

Windows 8 64-bit Issues

Single GPU Issues

- ▶ [Optimus][Notebook]: After installing the driver, the Device Manager includes an entry for the NVIDIA Virtual Audio Device but the entry has a yellow bang.
The NVIDIA Virtual Audio Device is not needed nor used on Optimus notebooks, so there is no effect on your notebook function. To remove the yellow bang, reboot your notebook.
- ▶ [Guild Wars 2]: Ambient Occlusion effect disappears at different camera angles and when using supersampling. [1023202]

Windows 8.1 Issues

- ▶ [3DVision]: While playing a stereoscopic 3D video with stereoscopic 3D enabled, the monitor refresh rate switches to 60 Hz after changing the resolution using the Windows control panel. [1314811]
- ▶ With a 3DTV connected and the resolution set to an HD3D resolution through the NVIDIA Control Panel, the display flickers constantly after installing the driver via INF over driver version 320.49. [1315116]

Not NVIDIA Issues

This section lists issues that are not due to the NVIDIA driver as well as features that are not meant to be supported by the NVIDIA driver for Windows Vista/Windows 7.

- ▶ “Windows Vista Considerations” on page 23
- ▶ “Windows 7 Considerations” on page 23
- ▶ “Unsupported Features” on page 24
- ▶ “OpenGL Application Issues” on page 25
- ▶ “Application Issues” on page 26
- ▶ “Operating System Issues” on page 31

Windows Vista Considerations

These are behaviors that may be different from Windows XP and are related directly to the Windows Vista operating system.

▶ NVIDIA TurboCache

Windows Vista now controls the allocation of system memory to the GPU for TurboCache functions. The Windows Vista Display Properties pages show the shared system memory (SSM), or how much memory is allocated for NVIDIA GPUs to use for TurboCache.

For more information on graphics memory reporting under Windows Vista, visit <http://www.microsoft.com/whdc/device/display/graphicsmemory.mspx>.

Windows 7 Considerations

Hotplug Action

Unlike the hotplug activity under Windows Vista, the default settings are not applied when a new display is hotplugged, and there is no message balloon alert stating that a new display was detected. Under Windows 7, all display connection and detection events are handled through the Windows 7 Connecting and Configuring Displays (CCD) mechanism.

NVIDIA Control Panel Rotate Display Page

The rotation radio button labels are changed slightly under Windows 7 to be consistent with the Microsoft panel

Table 1.1 NVIDIA Control Panel Rotation Page Radio Buttons

Clockwise Rotation	Windows 7 Label	Windows Vista Label
0 degrees	Landscape	No rotation (Landscape)
90 degrees	Portrait	90 degrees to the right (Inverted Portrait)
180 degrees	Landscape (flipped)	180 degree rotation (Inverted landscape)
270 degrees	Portrait (flipped)	90 degrees to the left (Portrait)

Limitation

- ▶ When switching the refresh rate from 59 Hz to 60Hz, the refresh rate remains at 59 Hz.
See the Microsoft KB article KB2006076 at <http://support.microsoft.com/kb/2006076>.

Unsupported Features

The following are features and functionality that were available in driver releases supporting Windows XP, but are not—and will not be—available in driver releases for Windows Vista/Windows 7:

- ▶ **High resolution scaling desktop (HRSD)**
- ▶ **MultiView Display Mode** (for NVIDIA Quadro NVS graphics cards)
- ▶ **NVKeystone**
- ▶ **Unified back buffer (UBB) controls**
- ▶ **OpenGL Video Overlays**

This is an operating system limitation.

Vista window manager features will provide new ways of accomplishing overlays, but will require application porting.

- ▶ **Overclocking**

GPU overclocking is no longer supported in the default GPU driver control panel. This feature is available in the NVIDIA System Tools software, which you can download from NVIDIA.com.

- ▶ **GPU Temperature Monitoring**

Temperature monitoring is no longer supported in the default GPU driver control panel. This feature is available in the NVIDIA System Tools software, which you can download from NVIDIA.com.

- ▶ **AGP Settings Adjustment**
- ▶ **Video Zoom**
- ▶ **Pan & Scan** - the process of panning across the desktop in order to display a desktop on a monitor with lower resolution
- ▶ **Per-display Desktop Color Setting Adjustments**
For Clone mode, the desktop color setting adjustments through the NVIDIA Control Panel can only be made across all displays in a system, and not on a per-display basis.
- ▶ **Per-display Video Color Setting Adjustments**
For Dualview mode, the video color setting adjustments through the NVIDIA Control Panel can only be made across all displays in a system, and not on a per-display basis.
- ▶ **Edge Blending**
- ▶ **Run display optimization wizard**
- ▶ **Run multiple display wizard**
- ▶ **Run television setup wizard**
- ▶ **nView Horizontal and Vertical Span Modes**
Due to architectural changes in the new Windows Vista Window Display Driver Model (WDDM), span mode cannot be supported in NVIDIA graphics drivers. NVIDIA recommends using the built-in Windows Vista multi-display modes.
- ▶ **Display/Connection Wizard** (such as was provided with Windows Media Center Edition)
- ▶ **DVD/MPEG Extensions** (such as was provided with Windows Media Center Edition)
- ▶ **Audio Extensions** (such as was provided with Windows Media Center Edition)
- ▶ **NVIDIA nView Desktop Manager**
The nView Desktop Manager will not be included in drivers for GeForce products.

OpenGL Application Issues

The following are known compatibility issues for OpenGL applications developed under Windows XP:

- ▶ **Mixed GDI and OpenGL rendering does not work.**
A number of applications use GDI to render UI components and object highlighting. This is not supported in the Windows Vista driver model.
NVIDIA recommends converting GDI rendering to OpenGL.
The following are some applications that are known to have this issue:
 - Maya 7.01
- ▶ **Applications, Tools, and Benchmarks not Supported Under Windows Vista**
 - GLperf

- 3ds max 8 (later releases may be supported)
 - CATIA V5R15 (V5R16 is supported)
 - PTC's CDRS 2001
- ▶ Front buffered rendering may be slow, especially when DWM is enabled.
- Flushing the rendering queue while rendering to the front buffer may cause the window manager to recomposite. Applications should therefore minimize the frequency with which they flush the rendering queue.

Application Issues

- ▶ [Surround][Crysis 3]: With Surround enabled, the mouse cursor is restricted to one of the displays after launching the game. [1331143]
- ▶ Adobe Flash 10.x/11.x–1080p video content stutters during browser playback in full-screen mode.
- The issue is resolved with Flash 11.0.1.83 and later.*
- ▶ GeForce 500 Series: Crysis 2 (DirectX 11 mode)–with 16x Anisotropic filtering set using the NVIDIA Control Panel, there is LOD distortion and other issues with AF. [848406]
- ▶ GeForce 400 Series: Dirt 2–the game does not show any 3D-rendered objects when multisample antialiasing is increased to 16xCSSAA or higher. [644651]
- ▶ GeForce 400 Series: Aliens vs Predator (DirectX 11)–there is ghosting in the sky textures.[660817]
- ▶ GeForce 400 Series: S.T.A.L.K.E.R Clear Sky–there is flickering in the background when Sun Shadow is enabled. [667627]
- ▶ Dirt2–distant terrain is clipped. [644821]
- ▶ Dark Void–if you experience issues playing Dark Void, NVIDIA recommends the following steps:
- a Install all game patches.
Retail box owners can get the patch here:http://download.nvidia.com/downloads/nZone/patches/DarkVoid_PhysX_Update_Patch.exe
 - b From the Windows Control Panel->Add/Remove programs, uninstall **NVIDIA Game System Software 2.8.1**.
 - c From the Windows Control Panel->Add/Remove programs, right-click **NVIDIA PhysX** and then click **Repair**.
- If you still experience problems after performing these steps, then either enable V-Sync or skip the cut-scenes by pressing [**Enter**] twice at the cut-scene.
- ▶ Operation Flashpoint: Dragon Rising–the game crashes to the desktop when it starts to load.
- This is an issue in the application–the problem does not occur if you disconnect your internet cable.*

- ▶ World of Warcraft—if you have run the 3D Vision setup wizard, then the game automatically enables 3D stereo even after you disable it.
To work around this issue, you must uninstall the 3D Vision driver.
- ▶ Counter Strike—the application crashes to the desktop if the resolution or bit-depth is changed from the in-game video options menu. [416582]
This is an application issue, but the problem does not occur if you change the resolution or bit-depth from the game's main menu and not while in a game.
- ▶ Star Wars: Knights Of The Old Republic 2—the game fails to launch, and an “application has stopped working” error message appears. [420115]
This occurs because the application is not able to interpret the driver version correctly.
- ▶ Tiger Woods PGA Tour 2007—Fly-by shot before each hole blacks-out textures. [274697]
NVIDIA is working with the developer to resolve this issue.
- ▶ City of Heroes—The mouse cursor does not display. [259256]
*This is an application issue that can be worked around in full-screen mode by adding “compatible cursors 1” to the City of Heroes desktop shortcut.
NVIDIA is pursuing a fix with the application developer.*
- ▶ Sims 2—“Smooth Edges (AA)” option is not available with Release 100 drivers. [272477]
*This occurs because of an incorrect driver version check in the application.
NVIDIA has worked around this issue in the operating system by changing the way the driver version is reported to this application.*
- ▶ Warhammer 40k Dawn of War (all versions) does not run with Release 100 drivers. [273154]
*This occurs because of an incorrect driver version check in the application.
NVIDIA has worked around this issue in the operating system by changing the way the driver version is reported to this application.*
- ▶ Need for Speed Carbon—After upgrading with patch 1.3, the game crashes when launched. [290506]
This is an issue with the application patch under Windows Vista.
- ▶ Nascar Simracing—the game crashes when launched. [270792]
This is an issue with the application under Windows Vista.
- ▶ Call of Duty 2—Only solid colors render during game play when 4xAA is enabled. [257454]
*The application is not applying antialiasing properly. Please try selecting 2x AA, disabling antialiasing, or using NVIDIA Enhanced application or Override antialiasing modes.
NVIDIA is pursuing a fix with the application developer*

- ▶ Age of Empires III—the game has rendering artifacts, such as textured squares for smoke. [258036]
- ▶ Flight Simulator X—pressing Alt+Tab to switch to the desktop does not work. [293729]
- ▶ Everquest 2— with NVIDIA driver versions 100.xx, the following error message appears: [273346]

"You currently have a (7.15.11.120) video card installed. We recommend that you download version 7772 drivers before playing Everquest."

This occurs because the application is not checking the driver version correctly, but this does not affect game play. Please select "Continue Anyway" to launch the game. The problem does not occur with a previous Release 95 driver (xx.xx format).

NVIDIA is pursuing a fix with the application developer.
- ▶ Windows Vista 64-bit, [PhysX]: TheGameCreators PhysX Screen Saver doesn't get installed properly. [491613]

This is not an NVIDIA issue, but a bug in Vista 64-bit OS that affects the installation of many screen savers. To work around, locate the corresponding.scr file for the screen saver, then right-click and select Install.

Note: *PhysXscreensaver.scr is located in <system root>\ \windows\SysWOW64.*
- ▶ GeForce 9800 GTX: Flight Simulator Acceleration (DirectX 10) - the sky box does not render correctly when zoomed all the way out. [436158]

This is not an NVIDIA bug, but rather an application issue.
- ▶ GeForce 9800 GTX: Flight Simulator Acceleration (DirectX 10) - there is no antialiasing preview window. [436156]
- ▶ GeForce 9800 GX2: Fury (DirectX 10)—the character names flicker. [384917]

This is not an NVIDIA bug, but rather an application issue.
- ▶ GeForce 9600 GT, GeForce 9800 GX2, GeForce 8800 GTX/Ultra/GTS/GT: Assassin's Creed: Directors Cut - the shadow flickers. [400541]

This is not an NVIDIA bug, but rather an application issue.
- ▶ GeForce 9600 GT: Crysis (DirectX 9) - there is corruption in the game. [399261]

This is not an NVIDIA bug, but rather an issue with the application issue. To avoid this issue, use the DirectX 10 option of the game.
- ▶ GeForce 8800 GTX: Tabula Rasa—there is ghosting on the game character while standing below the drop ship after enabling refraction from the game control panel. [357271]

This is not an NVIDIA bug, but rather an application issue.
- ▶ GeForce 8800 GT: Company of Heroes DirectX10 - the application crashes when MSAA is enabled. [346495]

This is a Fraps 2.9.2 issue.
- ▶ GeForce 8 Series: Quake 4—there are white flashing artifacts. [273476]
- ▶ GeForce 8800: City of Heroes—there are corrupted textures in certain missions.[290659]

This has been fixed with the latest patch for the game.

- ▶ GeForce 8800: Ghost Recon - Advanced Warfighter—the gadget side bar bleeds through on the right side of the screen during game play. [281304]
- ▶ GeForce 8800 GTX: Star Wars Battle front 2—screen corruption occurs at 2560x1600 resolution. [325457]
- ▶ GeForce 8800 GTX, GeForce 7900 GTX: Neverwinter Nights 2—the mini map loses its background when the resolution is changed. [273788]
- ▶ GeForce 8800 GTX: Civilization 4—setting in-game 16x antialiasing AA disables all antialiasing.[303283]
- ▶ GeForce 8800 GTX: Flight Simulator—the terrain changes to low resolution when switching from Air Traffic-controlled to player-controlled airplane.[304840]
- ▶ GeForce 8800 GTX: Scarface—corruption during the game.[290007]
- ▶ GeForce 8800 GTX: Neverwinter Nights 2—only overlays render when switching to 2560x1600 using 8xAA. [302061, 314148]
- ▶ GeForce 8800 GTX: Command & Conquer:Tiberium Wars—the game crashes at 2560x1600 resolution, with 8x antialiasing enabled, and when in-game settings are set to the highest levels. [308248/316633]
- ▶ GeForce 8800 GT/GTX: Crysis (DirectX 10) - game performance drops after switching to a higher resolution and then switching back to the lower resolution. [368740]
- ▶ GeForce 8500/8400/8300: Corruption occurs while running MicroSoft SDK Basic HLSL sample application. [302209]
- ▶ GeForce 8500/8400/8300: Dark Messiah of Might and Magic—an application error occurs when quitting the game. [300980]

This is an issue with the application.

- ▶ GeForce 8500/8400/8300: Elder Scrolls IV: Oblivion—the game crashes after restoring from minimization. [296725]
- ▶ GeForce 8600 GT: Battlefield 2—the game crashes to desktop when set to 1900x1440 resolution 8x antialiasing. [322008]

This problem occurs only when you have FRAPS 2.6.4 installed. It does not occur with FRAPS 2.8.2

- ▶ 316403 GeForce 8 Series: NV SDK 9.5 Mandelbrot set fails to render fractal.

This is an issue with the NV SDK and will be fixed in a newer build.

- ▶ GeForce 8 Series: Prince of Persia—half the screen turns black and the other half turns white during resolution changes. [299484]

This is an issue with the application.

- ▶ GeForce 8800 GTX: Company of Heroes (DirectX 10)—the game crashes when the maximum settings are applied at 2560x1600 with 8xAA enabled. [321631]

This is an issue with the application.

- ▶ GeForce 8600M GT: Warmonger 2.1—the game intermittently stops responding after changing in-game resolution. [482889]
- ▶ GeForce 8600M GT: Dead Space - a “your graphics card does not meet Dead Space minimum requirement” error message appears after launching the game. [491410]
This is a limitation of the application, and only occurs if your monitor does not support 60 Hz refresh rate.
- ▶ GeForce 8600M GT: MPEG1 and MPEG2 playback using iTunes is choppy. [537550]
The application does not use hardware acceleration.

Application Issues Under SLI Mode

- ▶ [SLI], GeForce 200 series, Surround gaming: Pacific Fighters—the game fails to switch to Surround gaming resolutions even though they are listed in the game menu. [670389]
- ▶ [SLI], GeForce 200 Series: BioShock 2—artifacts appear in the game when SLI mode is enabled. [653303]
This is an application multi-GPU compatibility issue.
- ▶ [SLI]: NVIDIA SLI scaling on some applications under Windows Vista may not be as much as under Windows XP. Some applications include "S.T.A.L.K.E.R., Half-Life 2: Lost Coast, Company of Heroes, Battlefield 2142, Call of Duty 2, Hitman: Blood Money, and Far Cry. [302534 290803]
This is an application issue which has been resolved with the latest Steam patch.
- ▶ [SLI], GeForce 9800 GX2: The Witcher—a blooming light shines through objects with SLI mode enabled. [396736]
This is not an NVIDIA bug, but rather an application issue.
- ▶ [Quad SLI], GeForce 9800 GX2: Test Driver Unlimited—there is pausing/hitching during the cut scene transitions. [395207]
- ▶ [SLI], GeForce 8800 GTX, GeForce 8600, GeForce 6 Series: Company of Heroes—there is corruption in the ground textures. [294118]
This is an application issue, and has been fixed with the latest patch for the game.
- ▶ [SLI], GeForce 8800 GTX: Battlefield 2 and Battlefield 2142—the games crash when exiting back to the menu after being played at 2048x1536 using 8xAA or higher. [301985]
This is an issue with the application.
- ▶ [SLI], GeForce 8800: While uninstalling the driver, the error message "Windows host process (Rundll32) has stopped working" appears. [294219 280920]
- ▶ [SLI], GeForce 8800: Splinter Cell Double Agent – the game crashes when minimized and then invoked again. [294205]
- ▶ [SLI], GeForce 8800: Battlefield 2142 – 8xAA cannot be set from the game control panel.[294231]

Operating System Issues

Windows Vista

- ▶ Direct-X diagnostics tool (DXDIAG) may report an unexpected value for the display adapter's memory. [673360]

See the Microsoft KB article <http://support.microsoft.com/kb/2026022>.

- ▶ [SLI], GeForce 8800 GTX: While installing the graphics driver, the message "Incompatible display adapter has been disabled" appears and the display turns blank. [318173]

This issue is resolved in Windows 7.

- ▶ When S-video and DVI displays are set up in Clone mode and rotated 90 degrees, the screen turns black.[304267, 283546]

This is an issue with DirectX.

- ▶ Windows Vista, GeForce 8300 GS: With Aero-glass enabled, the screen flickers after rotating the display 90 degrees with S-Video as the primary display. [317347]

This issue is resolved in Windows 7.

Windows 8 Issues

- ▶ When upgrading from Windows 7 to Windows 8, the system fails to retrieve the installed WHQL display driver. [1024416]

See the Microsoft KB article KB2743349 <http://support.microsoft.com/kb/2743349>.

Known Product Limitations

This section describes problems that will not be fixed. Usually, the source of the problem is beyond the control of NVIDIA. Following is the list of problems and where they are discussed in this document:

- ▶ “Screen Turns Black When Performing Clean Overinstall of NVIDIA Drivers on Windows 8.1 Optimus Notebook” on page 34
- ▶ “Flickering Black Screen Occurs After Installing the NVIDIA Drivers on Windows 8” on page 35
- ▶ “Total Available Graphics Memory Reported Incorrectly” on page 36
- ▶ “Increasing 4-way SLI/Multi-GPU Performance” on page 37
- ▶ “3D Vision USB Driver Does Not Get Installed” on page 37
- ▶ “No PhysX Acceleration Using the GPU” on page 38
- ▶ “NVIDIA PhysX System Software Cannot be Installed or Uninstalled in Windows Safe Mode” on page 38
- ▶ “3DMark 11 Does not Run in Stereoscopic 3D Mode” on page 38
- ▶ “Previous Driver Files Remain After Overinstalling with Release 256 or Earlier Drivers” on page 39
- ▶ “Do not Use Windows Rollback for Graphics Drivers” on page 39
- ▶ “Uninstalling Drivers Using Device Manager is not Supported” on page 39
- ▶ “Changing the Primary Display Across SLI GPUs Takes Longer than Expected” on page 40
- ▶ “Understanding the DirectX Version Shown in the NVIDIA System Information Window” on page 40
- ▶ “Using HDMI Audio with Displays that have a High Native Resolution” on page 41
- ▶ “Using HDMI Displays that do not Support Audio” on page 41
- ▶ “Using HDMI/DisplayPort Audio in Dualview or Clone Mode Configurations” on page 42
- ▶ “Flat Panel Scaling Controls are Non-functional for Some TV Modes for Some Displays” on page 42
- ▶ “GPU Runs at a High Performance Level (full clock speeds) in Multi-display Modes” on page 43
- ▶ “GeForce GTX 295 Fan Control Does not Function With NVIDIA Control Panel Performance Group version 6.03.06.00” on page 43
- ▶ “1280x1024 @ 60 Hz not Available on BenQ FP241W Monitors” on page 43
- ▶ “GeForce 6 and 7 Series Cards Cannot Output Interlaced Signals in SLI Mode [251457]” on page 43
- ▶ “Image Sharpening Control not Available with GeForce 8 Series and later GPUs” on page 44

▶ “Gigabyte GA-6BX Motherboard” on page 44

Screen Turns Black When Performing Clean Overinstall of NVIDIA Drivers on Windows 8.1 Optimus Notebook

Issue

After installing a Release 325 driver earlier than version 326.09 on an Optimus notebook running Windows 8.1, a subsequent clean overinstall of a later driver results in a black screen. The screen turns black when the driver uninstalls the older driver.

Typically, you may encounter this when attempting to upgrade the NVIDIA driver after installing Windows 8.1. While installing Windows 8.1, Windows Update installs NVIDIA driver version 326.01, then during the clean overinstall the black screen occurs as the older driver is uninstalled.

Workaround - Prevention

To avoid the issue during the initial installation of Windows 8.1, do not reboot the system after Windows Update installs the NVIDIA driver. Then perform the custom clean overinstall of the newer driver.

Resolution

This issue does not occur after installing an NVIDIA driver version 326.09 or later for Windows 8.1. When driver version 326.09 or later is installed, performing a clean overinstall with a newer driver will not result in a black screen.

Flickering Black Screen Occurs After Installing the NVIDIA Drivers on Windows 8

Issue

After installing the NVIDIA drivers on Windows 8, the subsequent reboot results in a black or flickering screen.

Root Cause

This occurs because Windows Update performed a background installation of a Release 304 driver, which requires a reboot to complete the installation. After installing the Release 313 driver and then rebooting the system, installation of both the Release 304 as well as the Release 313 is completed, resulting in conflicting driver binaries and the black/flickering screen.

Workaround - Prevention

To avoid the issue, reboot the system before installing the Release 313 driver.

Alternately, you can check the driver status under the Device Manager and perform the reboot if the Device Manager indicates that a restart is needed. Then install the driver.

Workaround - Recovery

If you did not perform the necessary reboot prior to installing the driver and now encounter the black screen, do the following:

- 1 Reboot in Safe Mode.
- 2 Uninstall the driver.
- 3 Disconnect from the internet and then restart the system.
- 4 In normal mode, install the new driver.

Total Available Graphics Memory Reported Incorrectly

Background-TAG Memory

In the Windows Display Driver Model (WDDM), Total Available Graphics (TAG) memory is reported as the sum of

- Dedicated Video Memory (video memory dedicated for graphics use)
- Dedicated System Memory (system memory dedicated for graphics use), and
- Shared System Memory (system memory shared between the graphics subsystem and the CPU).

The values for each of these components are computed according to WDDM guidelines when the NVIDIA Display Driver is loaded.

Issue

Some TAG-reporting APIs represent video memory using 32-bits instead of 64-bits, and consequently do not properly report available graphics memory when the TAG would otherwise exceed 4 gigabytes (GB). This results in under reporting of available memory and potentially undesirable behavior of applications that rely on these APIs to report available memory.

The under reporting can be extreme. For example, 6 GB might be reported as 454 MB, and 8 GB might be reported as 1259 MB.

Driver Action for GeForce-based Graphics Systems

On graphics systems with less than 2.75 GB of advertized physical memory, the NVIDIA display driver typically limits the Shared System Memory to maintain a TAG memory value of less than 4 GB¹.

- ▶ This results in reliable reporting of sub-4 GB TAG memory on systems with less than 2.75 GB of advertized physical memory.
- ▶ On systems with 2.75 GB or more of advertized physical memory, you may see different reported TAG memory values between the NVIDIA Control Panel and other reporting APIs.

1. The WDDM guidelines dictate minimum and maximum values for the components, but the display driver may further constrain the values that are reported (within the allowed minimum and maximum).

Increasing 4-way SLI/Multi-GPU Performance

Issue

With some games and applications, you may experience little to no performance gain or even a performance drop with 4-way SLI or multi-GPU configurations.

Resolution

- 1 Open the NVIDIA Control Panel, then click **Manage 3D Settings** from the navigation pane.
- 2 Click the *Global Settings* tab, then scroll to the *Power management mode* feature, click the corresponding list arrow and select **Prefer maximum performance**, then click **Apply**.

3D Vision USB Driver Does Not Get Installed

Issue

After installing the NVIDIA graphics driver, if the 3D Vision USB emitter was not plugged in, the 3D Vision USB Controller driver does not get installed. If you plug in the emitter after installing the driver, the indicator light on the emitter will flash red and will not turn green.

Resolution

To fix this issue, NVIDIA recommends performing a driver re-install with the 3D Vision USB emitter connected. Please download the latest drivers and follow these steps:

- 1 Plug in the 3D Vision USB emitter.
- 2 Re-install the NVIDIA driver.
Select **Custom (Advanced)** and then select **Perform a clean Installation** during the driver installation.
- 3 Reboot.

No PhysX Acceleration Using the GPU

If after installing the PhysX System Software you find that there is no PhysX acceleration on supported applications, repeat the PhysX setup as follows:

- 1 Reboot the PC.
- 2 Open the NVIDIA Control Panel and then, under 3D Settings, click **Set PhysX configuration** to open that page.
- 3 Under **Select a PhysX processor**, verify that either **auto-select** or a specific NVIDIA GPU is selected.
- 4 Click **Apply**.

NVIDIA PhysX System Software Cannot be Installed or Uninstalled in Windows Safe Mode

Issue

Beginning with Release 280, the NVIDIA PhysX System Software is not included in the NVIDIA driver installation/uninstallation under safe mode.

Explanation

The NVIDIA PhysX System Software installer is not compatible with Microsoft's policy for Windows safe Mode. Consequently, installation or uninstallation of the PhysX System Software under safe mode would fail. To allow installation or uninstallation of the graphics driver under safe mode, the NVIDIA PhysX System Software is blocked from the process.

3DMark 11 Does not Run in Stereoscopic 3D Mode

Issue

When attempting to run 3DMark 11 with NVIDIA 3D Vision enabled, the benchmark may hang, present a black screen, or in other ways not appear correctly.

Explanation

3DMark 11 is not compatible with running in stereoscopic 3D. To facilitate running the benchmark, recent drivers will run it in monoscopic mode, even with 3D Vision enabled.

Previous Driver Files Remain After Overinstalling with Release 256 or Earlier Drivers

Issue

When installing a Release 256 or earlier driver over a Release 260 or later driver, some of the previous driver files remain on the hard disk, resulting in potential conflicts.

Workaround

After installing a Release 260 or later driver, you must uninstall the driver first before installing a Release 256 or earlier driver.

Do not Use Windows Rollback for Graphics Drivers

To reinstall a previous or older NVIDIA graphics driver, do not use the Windows rollback feature. This method will not reliably restore all the previous driver files.

Instead, use the Windows Add and Remove programs to remove the current driver, and then install the older driver using setup.exe.

Uninstalling Drivers Using Device Manager is not Supported

Issue

On all supported versions of Microsoft Windows, uninstalling the NVIDIA driver using the Windows Device Manager may not remove associated files or applications.

Explanation

Microsoft has confirmed that this behavior is by design. If you wish to uninstall the NVIDIA driver, it is recommended that you do so using Add and Remove programs.

See the [Microsoft KB article 2278714](#).

Changing the Primary Display Across SLI GPUs Takes Longer than Expected

Issue

On an SLI system, switching the primary (or SLI focus) display when each display in the SLI group is connected to a different GPU takes longer than expected.

Explanation

On an SLI system with each SLI GPU driving a display, the display connected to the slave GPU is the primary display (also the SLI focus display). In order to switch the primary display to the one connected to the other GPU, the master and slave GPU configuration must also switch. In order to reassign which GPU is the master and which is the slave, the driver must be reloaded. It the process of reloading the driver that takes the additional time.

Understanding the DirectX Version Shown in the NVIDIA System Information Window

The System Information window—accessed by clicking **System Information** at the bottom left corner of the NVIDIA Control Panel—provides technical information about the NVIDIA graphics cards and driver installed in the system.

It also provides information about the Windows version as well as the DirectX version that is installed.

However, in order to use the version of DirectX reported in the System Information window, the NVIDIA GPU and graphics driver must also support that DirectX version.

For example, driver version 197.45 and Windows Vista (with available patch) support DirectX 11. But only NVIDIA graphics cards based on the Fermi architecture released in 2010 support DirectX 11. So your system must have one of these cards installed in order to take advantage of DirectX 11 performance.

Using HDMI Audio with Displays that have a High Native Resolution

To use HDMI audio with some displays that have a native resolution higher than 1920x1080, you must set the display to a lower HD resolution.

Some HDMI displays have a native resolution that exceeds the maximum supported HD mode. For example, displays with a native resolution of 1920x1200 exceed the maximum supported HD mode of 1920x1080.

Applying this native mode results in display overscan which cannot be resized using the NVIDIA Control Panel since the mode is not an HD mode.

To avoid this situation and provide a better user experience, the driver treats certain TVs—such as the Viewsonic VX2835wm and the Westinghouse LVM-37w3—as a DVI monitor when applying the native mode. Because the driver does not treat the TV as an HDMI in this case, the HDMI audio is not used.

Using HDMI Displays that do not Support Audio

Some HDMI displays do not support audio, or have issues with GeForce 9 series and earlier, and GeForce GTX 200-series NVIDIA graphics cards.

The NVIDIA driver attempts to identify such displays and automatically disables the audio. For example, the NVIDIA driver disables HDMI audio for all Philips HDMI TVs, as these have been identified as having issues with GeForce 9 series and earlier, and GeForce GTX 200-series NVIDIA graphics cards.

There may be cases where either the driver disables audio even though there is no problem, or does not disable the audio when in fact the audio does not work. The following sections describe these situations and provides guidance for handling them.

Corrupted video and no audio

The driver has not disabled audio and the display's audio signal is incompatible with the graphics card, causing video corruption.

With a different display connected in order to establish video, disable audio for the HDMI display using the NVIDIA Control Panel-> Set Up Digital Audio page. Click the arrow for the problem display and then click **Turn off audio**.

Video but no audio

- ▶ Check the display list for the problem connection on the NVIDIA Control Panel->Set Up Digital Audio page.

- ▶ If **Turn off audio** is selected and you want to test whether your HDMI audio does, in fact, work, then click the list arrow and select the name of the display.

The driver will prompt you with instructions for testing HDMI audio with that display.

- ▶ If the display name is selected, then the driver has not successfully detected that an incompatible display is connected.

Future driver versions will properly identify such displays and disable audio.

Using HDMI/DisplayPort Audio in Dualview or Clone Mode Configurations

Two Audio-enabled Ports

In a multi-display configuration where both HDMI/DisplayPort audio ports are enabled, only the primary display will provide the audio.

One Audio-enabled Port

In a multi-display configuration where only one audio port is enabled, such as when one display is a DVI display, then the HDMI/DisplayPort display can provide the audio whether is it the primary or secondary display.

Flat Panel Scaling Controls are Non-functional for Some TV Modes for Some Displays

The NVIDIA Control Panel flat panel scaling controls on the "Adjust Desktop Size & Position" page are not intended to be used for TV modes, and normally the controls are not available for TV or HDTV displays.

However, Microsoft requires that certain TV/HDTV modes be available for all digital displays, including DVI and HDMI, even if they are not HDTV.

While the NVIDIA flat panel scaling controls are available for those displays, they will not be functional for the TV modes that appear in compliance with the Microsoft requirements. The affected modes are as follows:

- ▶ 1920x1080i @50/59.94/60 Hz
- ▶ 1280x720p @50/59.94/60 Hz
- ▶ 720x480p @ 59.94/60 Hz
- ▶ 720x576p @ 50 Hz

GPU Runs at a High Performance Level (full clock speeds) in Multi-display Modes

This is a hardware limitation with desktop and older notebook GPUs, and not a software bug. When multiple displays are connected and active, the GPU will always operate with full clock speeds in order to efficiently drive multiple displays—even when no 3D programs are running.



Note: NVIDIA notebook GeForce 5xxM series and later GPUs do not have this limitation. For those GPUs the driver can adjust the performance level, depending on demand, even when driving multiple displays.

GeForce GTX 295 Fan Control Does not Function With NVIDIA Control Panel Performance Group version 6.03.06.00

The GeForce GTX 295 fan control does not function properly when using the NVIDIA Control Panel Performance Group version 6.03.06.00. For proper fan control, use version 6.03.12.00 or later.

1280x1024 @ 60 Hz not Available on BenQ FP241W Monitors

Even though the monitor EDID lists 1280x1024 @ 60 Hz, the screen turns blank when using an HDMI connection. This is an issue with the monitor and not the NVIDIA driver.

Because of this issue with the monitor, the NVIDIA driver blocks the problem mode (1280x1024 @ 60 Hz) and makes it unavailable.

GeForce 6 and 7 Series Cards Cannot Output Interlaced Signals in SLI Mode [251457]

- **Problem**

Rendering problems and instability occur when outputting interlaced modes (480i, 576i and 1080i) over the Y Pr Pb component and DVI outputs.

- **Explanation**

This is a hardware limitation in SLI mode only and cannot be fixed via a driver update.

- **Resolution**

Due to this issue, starting in driver version 162.22 in Windows Vista, the driver will automatically disable SLI mode when using the 480i, 576i and 1080i modes over all connectors on the GeForce 6 and 7 series GPUs.

To re-enable SLI mode, you must choose a non-interlaced output mode and reboot your computer.

- GeForce 8 series GPUs do not have this hardware limitation and you can output all HDTV interlaced and progressive scan outputs in SLI mode.
- The 480p, 576p, 720p, and 1080p progressive scan modes do not have this issue in SLI mode and are not affected by this change.

Image Sharpening Control not Available with GeForce 8 Series and later GPUs

With GeForce 8 Series and later graphics cards, the **Image sharpening** slider on the NVIDIA Control Panel-> Display->Adjust Desktop Color Settings page is grayed out.

This control is intentionally disabled because image sharpening is not supported on GeForce 8 series and later GPUs.

Gigabyte GA-6BX Motherboard

This motherboard uses a Linfinity regulator on the 3.3-V rail that is rated to only 5 A—less than the AGP specification, which requires 6 A. When diagnostics or applications are running, the temperature of the regulator rises, causing the voltage to the NVIDIA chip to drop as low as 2.2 V. Under these circumstances, the regulator cannot supply the current on the 3.3-V rail that the NVIDIA chip requires.

This problem does not occur when the graphics board has a switching regulator or when an external power supply is connected to the 3.3-V rail.

02 THE RELEASE 325 DRIVER

This chapter covers the following main topics:

- ▶ “About the Release 325 Driver” on page 45
- ▶ “Hardware and Software Support” on page 46
- ▶ “Driver Installation” on page 55

About the Release 325 Driver

This driver release is from the Release 325 family of drivers (versions 325.xx to 327.xx). This driver package supports the GeForce 8, 9, 100, 200, 300, 400, 500, 600, and 700-series desktop GPUs as well as ION desktop GPUs. See “[Supported NVIDIA Desktop Products](#)” on page 46 for the list of specific products supported in this release.

The notebook driver is part of the NVIDIA Verde Notebook Driver Program, and can be installed on supported NVIDIA notebook GPUs. However, please note that your notebook original equipment manufacturer (OEM) provides certified drivers for your specific notebook on their website. NVIDIA recommends that you check with your notebook OEM about recommended software updates for your notebook. OEMs may not provide technical support for issues that arise from the use of this driver.

Hardware and Software Support

- ▶ “Supported Operating Systems” on page 46
- ▶ “Supported NVIDIA Desktop Products” on page 46
- ▶ “Supported NVIDIA Notebook Products” on page 50
- ▶ “Supported Languages” on page 55

Supported Operating Systems

This Release 325 driver includes drivers designed for the following Microsoft® operating systems:

- ▶ Microsoft Windows® 8.1, and supports both 32-bit and 64-bit versions.
- ▶ Microsoft Windows® 8, and supports both 32-bit and 64-bit versions.
- ▶ Microsoft Windows® 7, and supports both 32-bit and 64-bit versions.
- ▶ Microsoft Windows® Vista, and supports both 32-bit and 64-bit versions.

Supported NVIDIA Desktop Products

The following table lists the NVIDIA products supported by the Release 325 driver, version 327.23:

Table 2.1 Supported NVIDIA Desktop GPUs

Consumer Products
ION
ION LE
GeForce GTX TITAN
GeForce GTX 780, GTX 770
GeForce GTX 760
GeForce GTX 690
GeForce GTX 680
GeForce GTX 670
GeForce GTX 660 Ti
GeForce GTX 660
GeForce GTX 650 Ti
GeForce GTX 650
GeForce GT 645
GeForce GT 640
GeForce GT 630

Table 2.1 Supported NVIDIA Desktop GPUs

Consumer Products
GeForce GT 620
GeForce GT 610
GeForce 605
GeForce GTX 680
GeForce GTX 680
GeForce GTX 590
GeForce GTX 580
GeForce GTX 570
GeForce GTX 560 SE
GeForce GTX 560
GeForce GTX 560 Ti
GeForce GTX 555
GeForce GTX 550 Ti
GeForce GTX 480
GeForce GTX 470
GeForce GTX 465
GeForce GTX 460 SE and 460 SE v2
GeForce GTX 460 v2
GeForce GTX 295
GeForce GTX 285
GeForce GTX 280
GeForce GTX 275
GeForce GTX 260
GeForce GTS 450
GeForce GTS 250
GeForce GTS 240
GeForce GTS 150
GeForce GT 545
GeForce GT 530
GeForce GT 520
GeForce GT 430
GeForce GT 340
GeForce GT 330
GeForce GT 320
GeForce GT 240

Table 2.1 Supported NVIDIA Desktop GPUs

Consumer Products
GeForce GT 220
GeForce G210
GeForce 405
GeForce 210
GeForce 205
GeForce GTS 150
GeForce GT 130
GeForce GT 120
GeForce G100
GeForce 9800 GX2
GeForce 9800 GTX+
GeForce 9800 GTX
GeForce 9800 GT
GeForce 9600 GT
GeForce 9600 GS
GeForce 9600 GSO
GeForce 9500 GT
GeForce 9500 GS
GeForce 9400 GT
GeForce 9400
GeForce 9300 GS
GeForce 9300 GE
GeForce 9300
GeForce 9200
GeForce 8800 Ultra
GeForce 8800 GTX
GeForce 8800 GTS 512
GeForce 8800 GTS
GeForce 8800 GT
GeForce 8800 GS
GeForce 8600 GTS
GeForce 8600 GT
GeForce 8600 GS
GeForce 8500 GT
GeForce 8400 GS

Table 2.1 Supported NVIDIA Desktop GPUs

Consumer Products
GeForce 8400 SE
GeForce 8400
GeForce 8300 GS
GeForce 8300
GeForce 8200
GeForce 8100 / nForce 720a

Supported NVIDIA Notebook Products

The following tables list the NVIDIA notebook products supported by the Release 325 driver, version 327.23:



Note:

Hybrid Power technology is no longer supported.

The following Sony VAIO notebooks are supported: Sony VAIO F Series with NVIDIA GeForce 310M, GeForce 315M (All-in-One system), GeForce GT 330M, GeForce GT 425M, GeForce GT 520M, or GeForce GT 540M (All-in-One system). Other Sony VAIO notebooks are not supported at this time (please contact Sony for driver support).

Fujitsu notebooks are not supported by this release (Fujitsu Siemens notebooks are supported).

Table 2.2 Supported NVIDIA Notebook GPUs

Consumer Products
ION
ION LE

Table 2.2 Supported NVIDIA Notebook GPUs (continued)

Consumer Products
GeForce GT 740M
GeForce GT 730M
GeForce GT 710M
GeForce GTX 680M
GeForce GTX 675M
GeForce GTX 670M
GeForce GTX 660M
GeForce GT 650M
GeForce GT 640M LE
GeForce GT 640M
GeForce GT 635M
GeForce GT 630M
GeForce GT 620M
GeForce GT 610M
GeForce GTX 580M
GeForce GTX 570M
GeForce GTX 560M
GeForce GT 555M
GeForce GT 550M
GeForce GT 540M
GeForce GT 525M
GeForce GT 520MX
GeForce GT 520M
GeForce GTX 485M
GeForce GTX 480M
GeForce GTX 470M
GeForce GTX 460M
GeForce GT 445M
GeForce GT 435M
GeForce GT 425M
GeForce GT 420M
GeForce GT 415M
GeForce 610M
GeForce 410M

Table 2.2 Supported NVIDIA Notebook GPUs (continued)

Consumer Products
GeForce GTS 360M
GeForce GTS 350M
GeForce GTS 250M
GeForce GT 335M
GeForce GT 330M
GeForce GT 325M
GeForce GT 320M
GeForce 320M
GeForce 315M
GeForce 310M
GeForce 305M
GeForce GTX 285M
GeForce GTX 280M
GeForce GTX 260M
GeForce GT 240M
GeForce GT 230M
GeForce GT 220M
GeForce GTS 160M
GeForce GT 130M
GeForce GT 120M
GeForce G 210M
GeForce G 110M
GeForce G 105M
GeForce G 103M
GeForce G 102M
GeForce 9800M GTX
GeForce 9800M GTS
GeForce 9800M GT
GeForce 9800M GS
GeForce 9700M GTS
GeForce 9700M GT
GeForce 9650M GT
GeForce 9650M GS
GeForce 9600M GT
GeForce 9600M GS
GeForce 9500M GS

Table 2.2 Supported NVIDIA Notebook GPUs (continued)

Consumer Products
GeForce 9500M G
GeForce 9400M G
GeForce 9400M
GeForce 9300M GS
GeForce 9300M G
GeForce 9200M GS
GeForce 9200M GE
GeForce 9100M G
GeForce 8800M GTX
GeForce 8800M GTS
GeForce 8800M GS
GeForce 8700M GT
GeForce 8600M GT
GeForce 8600M GS
GeForce 8400M GT
GeForce 8400M GS
GeForce 8400M G
GeForce 8200M G
GeForce 8200M

Table 2.3 Supported NVIDIA NVS and Quadro NVS M GPUs

Consumer Products
NVS 5400M
NVS 5200M
NVS 5100M
NVS 4200M
NVS 3100M
NVS 2100M
Quadro NVS 320M
Quadro NVS 160M
Quadro NVS 150M
Quadro NVS 140M
Quadro NVS 135M
Quadro NVS 130M

Table 2.4 Supported NVIDIA Quadro M and Quadro FX M GPUs

Consumer Products
Quadro 5010M
Quadro 5000M
Quadro 4000M
Quadro 3000M
Quadro 2000M
Quadro 1000M
Quadro FX 3800M
Quadro FX 3700M
Quadro FX 3600M
Quadro FX 2800M
Quadro FX 2700M
Quadro FX 1800M
Quadro FX 1700M
Quadro FX 1600M
Quadro FX 880M
Quadro FX 770M
Quadro FX 570M
Quadro FX 380M
Quadro FX 370M
Quadro FX 360M

Supported Languages

The Release 325 Graphics Drivers supports the following languages in the main driver Control Panel:

English (USA)	German	Portuguese (Euro/ Iberian)
English (UK)	Greek	Russian
Arabic	Hebrew	Slovak
Chinese (Simplified)	Hungarian	Slovenian
Chinese (Traditional)	Italian	Spanish
Czech	Japanese	Spanish (Latin America)
Danish	Korean	Swedish
Dutch	Norwegian	Thai
Finnish	Polish	Turkish
French	Portuguese (Brazil)	

Driver Installation

Minimum Hard Disk Space

Desktop

The hard disk space requirement for 32-bit is minimum 220 MB for English-only, and 300 MB for International.

The hard disk space requirement for 64-bit is minimum 320 MB for English-only, and 400 MB for International.

Notebook

The hard disk space requirement for 32-bit is minimum 295 MB.

The hard disk space requirement for 64-bit is minimum 395 MB.

Before You Begin

nTune

If you have previously installed NVIDIA nTune, NVIDIA recommends that you uninstall nTune before installing this driver. After the driver install is complete, you can reinstall NVIDIA nTune.

Notebooks

- ▶ Check to make sure that your notebook has a supported GPU (see “Supported NVIDIA Notebook Products” on page 50).
- ▶ It is recommended that you back up your current system configuration.
- ▶ If you own a Dell Inspiron 1420, Dell XPS M1330, or Dell XPS M1530, or Dell LatitudeD630 or D630c, it is highly recommended that you first install this [Dell software update](#).

Installation Instructions

- 1 Follow the instructions on the NVIDIA .com Web site driver download page to locate the appropriate driver to download, based on your hardware and operating system.
- 2 From the driver download page, click the **Download** button.
The *Download Confirmation* page appears.
- 3 If you agree to the "License For Customer Use of NVIDIA Software", click the **Agree & Download** button to begin the download.
The *File Download* dialog appears.
- 4 Either click **Save** to save the file and then run it from your PC, or click **Run**.
An extraction path dialog appears prompting you to specify where on your PC you want the driver files to be installed.
- 5 Click **OK** to use the default location, or click the folder icon and specify an alternate location to install the driver files.
The files are extracted and then the NVIDIA Installer is launched automatically.
- 6 At the *License Agreement* page of the Installer, click **Agree and Continue**.

7 Follow the instructions in the NVIDIA Installer to complete the installation.



Note: The driver presents game screenshots while the driver is installing. If you are not connected to the internet during the installation, you may see a "Navigation to the webpage was cancelled" message instead. The message can be ignored and does not affect the installation. The message won't appear if the browser cache is cleared.



Note: The NVIDIA PhysX System Software will not be included in the installation if the same version or a later version is already installed.



Note: After the driver installation, Windows may default to 16-bpp color and disable the Desktop Window Manager (DWM). To work around this issue, set the color to 32-bpp and then reboot the PC.

See also the installation/uninstallation considerations explained in [“Known Product Limitations”](#) on page 32.

APPENDIX A MODE SUPPORT FOR WINDOWS

This chapter details the Windows modes supported by the Release 325 driver for NVIDIA products. It contains these sections:

- ▶ “General Mode Support Information” on page 59
- ▶ “Default Modes Supported by GPU” on page 60
- ▶ “Modes Supported by TV Encoders” on page 65

General Mode Support Information

The NVIDIA graphics driver includes a standard list of display modes that are supported by default. These modes are listed in the section “Default Modes Supported by GPU” on page 60.

The actual modes available depend on the capabilities of the display. In addition, the NVIDIA graphics driver has a “dynamic EDID detection” capability and will make available *additional* modes that are listed in the display EDID, provided the graphics hardware can support it.

The NVIDIA graphics driver also supports the high resolutions available with the displays listed in [Table A.1](#) as well as the non-standard modes listed in [Table A.2](#).

Table A.1 Modes Supported for High Resolution Displays

Display	Maximum Resolution
Apple 30” Cinema HD Display (Dual link DVI)	2560x1600 @ 60 Hz
Dell WFP 3007 (Dual Link DVI)	2560x1600 @ 60 Hz
HP LP3065 dual-link DVI flat panel	2560x1600 @ 60Hz.

Table A.2 Non-standard Modes Supported

Resolution		
1680 x 1050		
1366 x 768		

Default Modes Supported by GPU

This section lists the modes that are included by default in the driver INF for the following product families:

- ▶ “GeForce 700, 600, 500, 400, 300, 200, 100, 9 Series, and 8 Series GPUs” on page 61
- ▶ “GeForce 9M, 8M, 100M, 200M, 300M, 400M, 500M, 600M Series, and Quadro NVS and Quadro FX Notebook GPUs” on page 63

Understanding the Mode Format

Figure A.1 gives an example of how to read the mode information presented in this section.

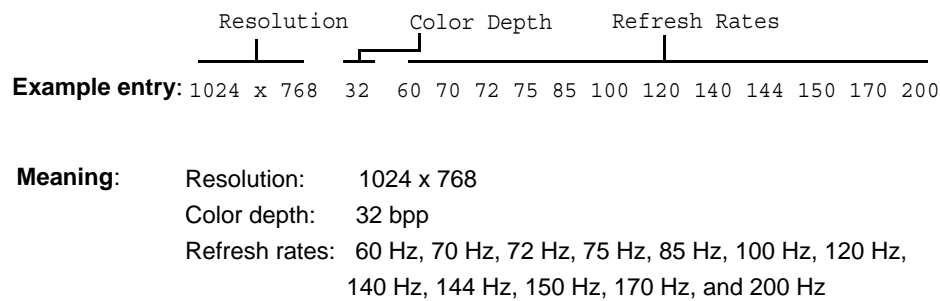


Figure A.1 Mode Format

Note:

- Horizontal spanning modes of 3840x1080 and above, and vertical spanning modes of 1920x2160 and above generally require at least 32 MB of video memory at 32 bpp.
- An “i” next to the refresh rate indicates an interlaced refresh rate.

GeForce 700, 600, 500, 400, 300, 200, 100, 9 Series, and 8 Series GPUs

This section lists the supported display resolutions, color depths, and refresh rates for the products listed in [“Supported NVIDIA Desktop Products”](#) on page 46.

Standard Modes

640 x 480	8	60 70 72 75 85 100 120 140 144 150 170 200 240
720 x 480	8	60
720 x 576	8	50
800 x 600	8	60 70 72 75 85 100 120 140 144 150 170 200 240
1024 x 768	8	60 70 72 75 85 100 120 140 144 150 170 200 240
1152 x 864	8	60 70 72 75 85 100 120 140 144 150 170 200
1280 x 720	8	60
1280 x 768	8	60 70 72 75 85 100 120 140 144 150 170
1280 x 800	8	60 70 72 75 85 100 120 140 144 150 170
1280 x 960	8	60 70 72 75 85 100 120 140 144 150 170
1280 x 1024	8	60 70 72 75 85 100 120 140 144 150 170
1360 x 768	8	60 70 72 75 85 100 120 140 144 150 170
1600 x 900	8	60 70 72 75 85 100 120 140 144 150
1600 x 1024	8	60 70 72 75 85 100 120
1600 x 1200	8	60 70 72 75 85 100 120
1680 x 1050	8	60
1920 x 1080	8	60
1920 x 1200	8	60 70 72 75 85 100
1920 x 1440	8	60 70 72 75 85
2048 x 1536	8	60

640 x 480	16	60 70 72 75 85 100 120 140 144 150 170 200 240
720 x 480	16	60
720 x 576	16	50
800 x 600	16	60 70 72 75 85 100 120 140 144 150 170 200 240
1024 x 768	16	60 70 72 75 85 100 120 140 144 150 170 200 240
1152 x 864	16	60 70 72 75 85 100 120 140 144 150 170 200
1280 x 720	16	60
1280 x 768	16	60 70 72 75 85 100 120 140 144 150 170
1280 x 800	16	60 70 72 75 85 100 120 140 144 150 170
1280 x 960	16	60 70 72 75 85 100 120 140 144 150 170
1280 x 1024	16	60 70 72 75 85 100 120 140 144 150 170
1360 x 768	16	60 70 72 75 85 100 120 140 144 150 170
1600 x 900	16	60 70 72 75 85 100 120 140 144 150
1600 x 1024	16	60 70 72 75 85 100 120
1600 x 1200	16	60 70 72 75 85 100 120
1680 x 1050	16	60
1920 x 1080	16	60

1920 x 1200	16		60 70 72 75 85 100
1920 x 1440	16		60 70 72 75 85
2048 x 1536	16		60

640 x 480	32		60 70 72 75 85 100 120 140 144 150 170 200 240
720 x 480	32		60
720 x 576	32	50	
800 x 600	32		60 70 72 75 85 100 120 140 144 150 170 200 240
1024 x 768	32		60 70 72 75 85 100 120 140 144 150 170 200 240
1152 x 864	32		60 70 72 75 85 100 120 140 144 150 170 200
1280 x 720	32		60
1280 x 768	32		60 70 72 75 85 100 120 140 144 150 170
1280 x 800	32		60 70 72 75 85 100 120 140 144 150 170
1280 x 960	32		60 70 72 75 85 100 120 140 144 150 170
1280 x 1024	32		60 70 72 75 85 100 120 140 144 150 170
1360 x 768	32		60 70 72 75 85 100 120 140 144 150 170
1600 x 900	32		60 70 72 75 85 100 120 140 144 150
1600 x 1024	32		60 70 72 75 85 100 120
1600 x 1200	32		60 70 72 75 85 100 120
1680 x 1050	32		60
1920 x 1080	32		60
1920 x 1200	32		60 70 72 75 85 100
1920 x 1440	32		60 70 72 75 85
2048 x 1536	32		60

GeForce 9M, 8M, 100M, 200M, 300M, 400M, 500M, 600M Series, and Quadro NVS and Quadro FX Notebook GPUs

This sections lists the supported display resolutions, color depths, and refresh rates for the products listed in “Supported NVIDIA Notebook Products” on page 50.

Standard Modes

640 x 480	8	60 70 72 75 85 100 120 140 144 150 170 200 240
720 x 480	8	60
720 x 576	8	50
800 x 600	8	60 70 72 75 85 100 120 140 144 150 170 200 240
1024 x 768	8	60 70 72 75 85 100 120 140 144 150 170 200 240
1152 x 864	8	60 70 72 75 85 100 120 140 144 150 170 200
1280 x 720	8	60
1280 x 768	8	60 70 72 75 85 100 120 140 144 150 170
1280 x 800	8	60 70 72 75 85 100 120 140 144 150 170
1280 x 960	8	60 70 72 75 85 100 120 140 144 150 170
1280 x 1024	8	60 70 72 75 85 100 120 140 144 150 170
1360 x 768	8	60 70 72 75 85 100 120 140 144 150 170
1600 x 900	8	60 70 72 75 85 100 120 140 144 150
1600 x 1024	8	60 70 72 75 85 100 120
1600 x 1200	8	60 70 72 75 85 100 120
1680 x 1050	8	60
1920 x 1080	8	60
1920 x 1200	8	60 70 72 75 85 100
1920 x 1440	8	60 70 72 75 85
2048 x 1536	8	60

640 x 480	16	60 70 72 75 85 100 120 140 144 150 170 200 240
720 x 480	16	60
720 x 576	16	50
800 x 600	16	60 70 72 75 85 100 120 140 144 150 170 200 240
1024 x 768	16	60 70 72 75 85 100 120 140 144 150 170 200 240
1152 x 864	16	60 70 72 75 85 100 120 140 144 150 170 200
1280 x 720	16	60
1280 x 768	16	60 70 72 75 85 100 120 140 144 150 170
1280 x 800	16	60 70 72 75 85 100 120 140 144 150 170
1280 x 960	16	60 70 72 75 85 100 120 140 144 150 170
1280 x 1024	16	60 70 72 75 85 100 120 140 144 150 170
1360 x 768	16	60 70 72 75 85 100 120 140 144 150 170
1600 x 900	16	60 70 72 75 85 100 120 140 144 150
1600 x 1024	16	60 70 72 75 85 100 120
1600 x 1200	16	60 70 72 75 85 100 120
1680 x 1050	16	60
1920 x 1080	16	60

```

1920 x 1200 16      60 70 72 75 85 100
1920 x 1440 16      60 70 72 75 85
2048 x 1536 16      60
-----
 640 x  480 32      60 70 72 75 85 100 120 140 144 150 170 200 240
 720 x  480 32      60
 720 x  576 32      50
 800 x  600 32      60 70 72 75 85 100 120 140 144 150 170 200 240
1024 x  768 32      60 70 72 75 85 100 120 140 144 150 170 200 240
1152 x  864 32      60 70 72 75 85 100 120 140 144 150 170 200
1280 x  720 32      60
1280 x  768 32      60 70 72 75 85 100 120 140 144 150 170
1280 x  800 32      60 70 72 75 85 100 120 140 144 150 170
1280 x  960 32      60 70 72 75 85 100 120 140 144 150 170
1280 x 1024 32      60 70 72 75 85 100 120 140 144 150 170
1360 x  768 32      60 70 72 75 85 100 120 140 144 150 170
1600 x  900 32      60 70 72 75 85 100 120 140 144 150
1600 x 1024 32      60 70 72 75 85 100 120
1600 x 1200 32      60 70 72 75 85 100 120
1680 x 1050 32      60
1920 x 1080 32      60
1920 x 1200 32      60 70 72 75 85 100
1920 x 1440 32      60 70 72 75 85
2048 x 1536 32      60
-----
 640 x  480 64      60 70 72 75 85 100 120 140 144 150 170 200 240
 720 x  480 64      60
 720 x  576 64      50
 800 x  600 64      60 70 72 75 85 100 120 140 144 150 170 200 240
1024 x  768 64      60 70 72 75 85 100 120 140 144 150 170 200 240
1152 x  864 64      60 70 72 75 85 100 120 140 144 150 170 200
1280 x  720 64      60
1280 x  768 64      60 70 72 75 85 100 120 140 144 150 170
1280 x  800 64      60 70 72 75 85 100 120 140 144 150 170
1280 x  960 64      60 70 72 75 85 100 120 140 144 150 170
1280 x 1024 64      60 70 72 75 85 100 120 140 144 150 170
1360 x  768 64      60 70 72 75 85 100 120 140 144 150 170
1600 x  900 64      60 70 72 75 85 100 120 140 144 150
1600 x 1024 64      60 70 72 75 85 100 120
1600 x 1200 64      60 70 72 75 85 100 120
1680 x 1050 64      60
1920 x 1080 64      60
1920 x 1200 64      60 70 72 75 85 100
1920 x 1440 64      60 70 72 75 85
2048 x 1536 64      60

```

Modes Supported by TV Encoders

Table A.3 and Table A.4 list the NTSC, PAL, and HDTV TV-Out modes supported by the NVIDIA driver.

Table A.3 Mode Support for S-Video and Composite Out

Resolution	Bit depth	Comments
320x200	8, 16, 32	DirectDraw mode; not selectable as a Windows desktop
320x240	8, 16, 32	DirectDraw mode; not selectable as a Windows desktop
640x400	8, 16, 32	DirectDraw mode; not selectable as a Windows desktop
640x480	8, 16, 32	
720x480	8, 16, 32	Overscans (for video)
720x576	8, 16, 32	Overscans (for video)
800x600	8, 16, 32	
1024x768	8, 16, 32	Conexant 25871 only

Table A.4 Mode Support for Component YPrPb Out and DVI Out

Resolution	Comments
480i (SDTV)	Supported on graphics boards with Conexant 875 or Philips 7108 TV encoders and compatible connectors, and compatible GeForce 8 Series and later GPUs.
480p (EDTV)	
720p (HDTV)	
1080i (HDTV)	
576i (PAL)	
576p (PAL)	

The driver supports manual overscan correction for component and DVI outputs. See the online NVIDIA Control Panel Help for instructions on how to use the overscan correction features.

Notice

ALL NVIDIA DESIGN SPECIFICATIONS, REFERENCE BOARDS, FILES, DRAWINGS, DIAGNOSTICS, LISTS, AND OTHER DOCUMENTS (TOGETHER AND SEPARATELY, "MATERIALS") ARE BEING PROVIDED "AS IS." NVIDIA MAKES NO WARRANTIES, EXPRESSED, IMPLIED, STATUTORY, OR OTHERWISE WITH RESPECT TO THE MATERIALS, AND EXPRESSLY DISCLAIMS ALL IMPLIED WARRANTIES OF NONINFRINGEMENT, MERCHANTABILITY, AND FITNESS FOR A PARTICULAR PURPOSE.

Information furnished is believed to be accurate and reliable. However, NVIDIA Corporation assumes no responsibility for the consequences of use of such information or for any infringement of patents or other rights of third parties that may result from its use. No license is granted by implication of otherwise under any patent rights of NVIDIA Corporation. Specifications mentioned in this publication are subject to change without notice. This publication supersedes and replaces all other information previously supplied. NVIDIA Corporation products are not authorized as critical components in life support devices or systems without express written approval of NVIDIA Corporation.

HDMI

HDMI, the HDMI logo, and High-Definition Multimedia Interface are trademarks or registered trademarks of HDMI Licensing LLC.

Macrovision Compliance Statement

NVIDIA Products that are Macrovision enabled can only be sold or distributed to buyers with a valid and existing authorization from Macrovision to purchase and incorporate the device into buyer's products.

Macrovision copy protection technology is protected by U.S. patent numbers 5,583,936; 6,516,132; 6,836,549; and 7,050,698 and other intellectual property rights. The use of Macrovision's copy protection technology in the device must be authorized by Macrovision and is intended for home and other limited pay-per-view uses only, unless otherwise authorized in writing by Macrovision. Reverse engineering or disassembly is prohibited.

OpenCL Notice

Portions of the NVIDIA system software contain components licensed from third parties under the following terms:

Clang & LLVM:

Copyright (c) 2003-2008 University of Illinois at Urbana-Champaign.

All rights reserved.

Portions of LLVM's System library:

Copyright (C) 2004 eXtensible Systems, Inc.

Developed by:

LLVM Team

University of Illinois at Urbana-Champaign

<http://llvm.org>

Permission is hereby granted, free of charge, to any person obtaining a copy of this software and associated documentation files (the "Software"), to deal with the Software without restriction, including without limitation the rights to use, copy, modify, merge, publish, distribute, sublicense, and/or sell copies of the Software, and to permit persons to whom the Software is furnished to do so, subject to the following conditions:

Redistributions of source code must retain the above copyright notice, this list of conditions and the following disclaimers.

Redistributions in binary form must reproduce the above copyright notice, this list of conditions and the following disclaimers in the documentation and/or other materials provided with the distribution.

Neither the names of the LLVM Team, University of Illinois at Urbana-Champaign, nor the names of its contributors may be used to endorse or promote products derived from this Software without specific prior written permission.

THE SOFTWARE IS PROVIDED "AS IS", WITHOUT WARRANTY OF ANY KIND, EXPRESS OR IMPLIED, INCLUDING BUT NOT LIMITED TO THE WARRANTIES OF MERCHANTABILITY, FITNESS FOR A PARTICULAR PURPOSE AND NONINFRINGEMENT. IN NO EVENT SHALL THE CONTRIBUTORS OR COPYRIGHT HOLDERS BE LIABLE FOR ANY CLAIM, DAMAGES OR OTHER LIABILITY, WHETHER IN AN ACTION OF CONTRACT, TORT OR OTHERWISE, ARISING FROM, OUT OF OR IN CONNECTION WITH THE SOFTWARE OR THE USE OR OTHER DEALINGS WITH THE SOFTWARE.

Trademarks

NVIDIA, the NVIDIA logo, NVIDIA nForce, GeForce, NVIDIA Quadro, NVDDVD, NVIDIA Personal Cinema, NVIDIA Soundstorm, Vanta, TNT2, TNT, RIVA, RIVA TNT, VODOO, VODOO GRAPHICS, WAVEBAY, Accuview Antialiasing, Detonator, Digital Vibrance Control, ForceWare, NVRotate, NVSensor, NVSync, PowerMizer, Quincunx Antialiasing, Sceneshare, See What You've Been Missing, StreamThru, SuperStability, T-BUFFER, The Way It's Meant to be Played Logo, TwinBank, TwinView and the Video & Nth Superscript Design Logo are registered trademarks or trademarks of NVIDIA Corporation in the United States and/or other countries. Other company and product names may be trademarks or registered trademarks of the respective owners with which they are associated.

Copyright

© 2013 NVIDIA Corporation. All rights reserved.